

Examining the Impact of Internet Use on TV Viewing:

Details Make a Difference

Robert Kraut

Sara Kiesler

Bonka Boneva

Irina Shklovski

Human-Computer Interaction Institute

Carnegie Mellon University

5000 Forbes Avenue

Pittsburgh, PA 15213

ABSTRACT

What consequences does the widespread adoption of the Internet have, both for how Americans spend their time and on their overall psychological well-being? The Internet is used for a wide variety of purposes: communicating with friends and family, meeting new people, acquiring information about news, health, and other topics, entertainment, and commerce. Most research that examines the Internet's impact on social life has ignored this diversity of use, treating aggregate Internet usage as the independent variable by comparing users versus non-users, heavy versus light users, or early versus late adopters. Most research has also used cross-sectional data, thereby confounding the characteristics of Internet users with the consequences of using the Internet. This paper reports data from a national longitudinal survey, disaggregating Internet use into discrete types of use, and employing longitudinal analyses to test causal relationships. Our results show that cross-sectional and longitudinal analyses lead to different conclusions and that the precise ways that we use the Internet matter. We illustrate these points by examining the effects of Internet use on respondents' TV viewing habits.

Keywords

Internet use, e-mail, communication, social relationships, closeness, social support, research methods.

Examining the Impact of Internet Use:

Details Make a Difference

INTRODUCTION

The proportion of U.S. households with a computer soared from 8.2% in 1984 to 56.5% in 2001. By September 2001, over 50% of U.S. households also had Internet access (U. S. Department of Commerce, 2002). The dramatic changes now occurring in household computing have the potential to change the lives of average citizens as much as the telephone did in the early 1900s, and as the television did in the 1950s and 1960s. Social scientists are now attempting to document how computing and the Internet are becoming integrated into the daily lives of users and the effects that this use is having. For example, efforts to document the impact of Internet use are occurring in the domains of psychological use of time and other media (see Robinson & DeHaan, this volume), the establishment and maintenance of social relationships (see McKenna & Seidman, this volume), political participation (Katz & Rice, 2003), psychological functioning, health, education (see Jackson et al., this volume), and consumer behavior, among other domains.

This paper examines the methods that many social scientists deploy to examine this impact. We review prior literature to illustrate problems that are widespread in examining the influence of Internet use. We argue that much of this research reaches limited or even erroneous conclusions, both because it uses cross-

sectional data to draw causal implications and because it fails to distinguish between varieties of Internet use.

The empirical section of this paper is based on a national panel survey of 980 individuals. We show that the Internet is used for a wide range of functions. We use confirmatory factor analysis to disaggregate overall Internet use into a set of components, which are only moderately related to each other: interpersonal communication with friends and family, interpersonal communication with strangers, instrumental information seeking, entertainment, and commerce. Just as one would expect that chatting with friends on the phone and watching entertainment on TV would have different influences on those who use these earlier technologies, so too would one expect that using the Internet for different purposes will have different effects on its users.

The empirical study examines the effects of Internet use on TV viewing, illustrating the time-use perspective on the impact of new media. We use hierarchical linear growth modeling to differentiate cross-sectional from longitudinal relationships. Conclusions from cross-sectional data differ from those based on longitudinal data, and both sets of conclusions depend on how people use the Internet. For example, the cross-sectional analyses show that people who use the Internet heavily tend to watch TV more frequently than those who don't use the Internet at all, or use it lightly. This association is especially strong for people who use the Internet for entertainment and escapist activities, and is reversed for people who use the Internet to communicate with friends and family.

In contrast, the longitudinal data show that heavier use of the Internet is associated with declines in TV viewing. This association is especially strong for people who use the Internet to participate in online groups and meet new people online.

Problems with the current research

Varieties of Internet use. Compared to TV or the telephone, the Internet is a plastic technology, amenable to a wider range of uses. According to recent data from the Pew Internet and American Life project (Pew Internet & American Life Project, 2003), Americans use the Internet most for sending electronic mail, using search engines, researching products and services before buying, and looking for information for hobbies and leisure activities. However, the range of use is very diverse, and includes playing online games, listening to music, downloading pornography, developing and displaying photographs, gambling, taking a class, and seeking dates. As individuals gain more experience with the Internet, they increasingly use it for a wider variety of purposes. Subscribers get Internet access for one purpose, but then its use extends to many other areas of daily life. For example, parents may buy a computer for their children's school work but then find that the household also uses it for e-mail, instant messaging, game-playing, and online shopping (e.g., Kraut, Scherlis, Mukhopadhyay, Manning, & Kiesler, 1996).

Moreover, the potential uses of the Internet are expanding greatly as businesses and other organizations offer new content and services online. Although

information sharing and communication were available from the early days of the ARPAnet (Leiner et al., 2002) the amount of information available, the topics covered, the numbers of potential online communication partners, and the services to support information acquisition and communication have all increased since the 1970s, radically expanding the options open to users. Two popular yet recent additions include sophisticated search engines and instant messaging applications.

Despite this diversity of use, most research on the social impact of the Internet treat its use as an undifferentiable whole. Many researchers simply compare Internet users with nonusers (e.g., Cole et al., 2000; Pronovost, 2002; Robinson, Kestnbaum, Neustadt, & Alvarez, 2002), an especially crude comparison. Others compute an aggregate frequency-of-use measure, without differentiating among types of use. For example, our own research used a summary index of Internet use (self-reported frequency of use in Kraut et al., 2002; machine-logged hours of use in Kraut et al., 1998) when assessing the consequences of Internet use on social involvement and psychological wellbeing. Others concentrate on people's history of online activity, for example, distinguishing new users from veterans (e.g., Cummings & Kraut, 2002; Howard, Rainie, & Jones, 2001; Katz & Aspden, 1997).

There is strong reason to think that different personal attributes and precipitating events will cause people to use the Internet for different purposes. For example, compared to adults, teenagers and young adults are much more likely to use the Internet for listening to music, for visiting chat rooms to meet new people, and for

synchronous communication through instant messaging programs (Lenhart, Rainie, & Lewis, 2001). Consistent with their broader role responsibilities, women are more likely than men to use the Internet for communication with friends and family (Boneva, Kraut, & Frohlich, 2001). Women, people who are ill, and those who care for ill family members are especially likely to use the Internet as a source of health information (Kommers & Rainie, 2002). Extraverts are especially likely to use the Internet for social communication (Kraut et al., 2002).

There is also reason to expect that using the Internet for different purposes is likely to have differential effects on the users. McKenna (this volume) argues, for example, that people who use the Internet to reveal aspects of their true selves get more benefit from its use than others. The parallels with television viewing, a much more constrained activity, is instructive. Watching dramatic violence on TV in childhood leads to more aggressive behavior in adulthood (Huesmann, Moise-Titus, Podolski, & Eron, 2003). How television is used, however, makes a difference. In addition to this influence on adult aggression, using television primarily for entertainment purposes (rather than for information) is associated with declines in civic engagement. On the other hand, watching the news on TV, even though it is filled with violence, seems to be associated with better social outcomes, including increased civic engagement (Putnam, 2000).

Very little research has attempted to demonstrate that specific uses of the Internet have identifiable consequences, and most of it is concentrated in the area of

health. (see Bass, 2003 for a recent review.) More generally, Kraut, Mukhopadhyay, Szczypula, Kiesler, and Scherlis (1999) distinguished between using the Internet for interpersonal communication and for acquiring information. While using the Internet for communication led to increased time spent online in subsequent periods, using the Internet for information-gathering purposes decreased time spent online in subsequent periods. Weiser (2001) also differentiated using the Internet for social and information purposes. Based on cross-sectional data, he concluded that social uses of the Internet lead to reduced social integration, whereas greater use of the Internet for informational purposes was associated with increased social integration. While valid, the distinction between communication and informational uses of the Internet is crude. For example, communication with friends and family is likely to differ from communication with strangers online, both in terms of causes and of consequences. Weiser's (2001) paradoxical conclusions that social uses of the Internet were associated with low social integration may reflect his construction of a social use scale that is dominated by communication with strangers. One of the goals of the current research is to differentiate among uses of the Internet in a richer way and to identify uses that lead to changes in other media use and stress.

A Comparison Of Cross-sectional and Longitudinal Research Methods

The second goal of this paper is to illustrate how survey research design can influence the conclusions one can draw about the effects of Internet use. To do so, our research contrasts cross-sectional designs with panel designs. Cross-sectional designs assess the association of Internet use and a variable of interest at a single

time point. In contrast, panel designs collect data from the same people at multiple time periods and estimate the degree to which *changes* in a dependent variable are associated with Internet use.

Documenting the Impact of Internet Use

We examine the potential effects that Internet use has on TV viewing. The Internet's impact on the use of other media is related to earlier research in media studies that examines the substitutability of the mass media or their ability to stimulate each other (Atkin, 2001; Robinson & Kestnbaum, 1999). In addition, this dependent variable is generally representative of a research tradition that examines how the introduction of one pastime affects other uses of time (Gershuny, 2000; Robinson, 1990).

Many commentators hypothesize that the Internet will displace TV or, at least, will reduce its dominance in the American household, much as TV viewing did to listening to the radio, reading magazines, or going to the movies. As Robinson & de Haan (this volume) note, according to a functional displacement hypothesis, one technology will displace another to the extent that the new technology can be used for similar functions as the old, while offering new opportunities or reduced costs (Carey & Moss, 1985). For example, television displaced radio as the preferred source for story-based entertainment and the evening newspaper as the source for news, in part, by augmenting the earlier technologies with moving pictures. By this logic, one may expect that the Internet could displace television as a source of both entertainment and news, by increasing the diversity of available material and offering individualization of schedule and content.

To date, evidence on how Internet use affects television watching is ambiguous. For example, Coffey & Stripp (1997) predicted from PC meter data that personal computer users did not reduce their TV viewing. Around that same time, in a seminal study of American use of time, Robinson & Godbey (1999) found no substitution of TV watching with computer use. However, results from more recent research are mixed, with some research suggesting that the Internet is displacing TV watching (Kaynay & Yelsma, 2000; Nie & Hillygus, 2002) and some showing just the reverse—that Internet use increases TV watching and other media use (Cole et al., 2000). In this volume, Robinson & de Haan show that Internet users watch approximately 4 fewer hours of TV per week than non-users in the U.S. (Table 2), but in the Netherlands, Internet users and non-users do not differ in their hours of TV watching (Table 4).

The functional displacement hypothesis goes beyond merely predicting that heavy Internet use will lead to reductions in TV viewing. If functional displacement is happening, then how people use the Internet should determine what other technologies will be displaced. In particular, we should expect to see greater reductions in TV watching among those who use the Internet for news and entertainment purposes than among those who use it for other purposes, including communication and commerce.

DATA AND METHODS

Data collection.

The data for this study comes from a national U.S. panel survey, conducted between June 2000 and March 2002. Respondents completed a questionnaire at Time 1, starting in June 2001, and again six to eight months later at Time 2, via postal mail or on the Internet. The national sample was recruited by random digit dialing of residential telephone exchanges, to secure a representative sample of U.S. households. Of those initially contacted by telephone phone, 43% agreed to participate. 41% of the original sample completed the survey at Time 1 and 82.8% of these completed the survey again at Time 2. 74% of respondents at Time 1 and 72.3% at Time 2 had Internet access. Respondents with Internet access were asked to complete the survey online, while those who did not have Internet access were mailed paper surveys. If respondents with Internet access did not complete a survey online they were subsequently sent a copy by postal mail. Of all respondents at both times, 60% completed the survey online, while all others completed a mail survey. Respondents' ages ranged from 13 to 94. Of those who completed the surveys, 43% were men, 85% adults (19 years or older), 89% were Caucasian and 61% were married. Of all respondents, 30% had a household income of up to \$30,000, 44% had between \$30,000-\$70,000, and 26% had an income of \$70,000 or more.

Key variables.

Internet use. The major independent variable for this research is the extent to which respondents used the Internet. All the measures are based on respondents' descriptions of the frequency with which they used a computer or the Internet at home for 27 different purposes, such as "communicating with friends," "getting

the news online,” “playing games,” etc. Figure 1 lists the full set of items asked. Participants responded using a 7-point, quasi-logarithmic Likert-scale, with response categories ranging from “several times a day,” “about once a day,” “3-5 days per week,” “1-2 days per week,” “every few weeks,” “less often,” and “never.” We then used these items to construct several indexes of Internet use. These indexes indicated whether the respondent used the Internet for any of the stated purposes, and included both a binary measure—indicating whether the respondent used the Internet at all—and several continuous measures for how often respondents used the Internet, both overall and for specific purposes. We describe the creation of these Internet-use indexes in the following paragraphs.

Some research has simply compared users and non-users of the Internet (e.g., Katz & Aspden, 1997; Robinson & Haan, this volume), while others have used a measure of time spent online among active Internet users (e.g., Goget, Yamauchi, & Suman, 2002). Because the first of these approaches uses a dichotomous measure, it is insensitive. The second approach uses a measure that can only be calculated for those who actively use the Internet, truncating the distribution of Internet use and limiting the statistical power available for analysis. Our research combines these approaches, by constructing two measures of Internet use: a binary measure and a frequency measure. As described below, we also disaggregated the frequency measure of Internet use, to create separate indexes to measure the use of the Internet for each of several different functions.

Use Internet. We constructed a binary measure of Internet use at home at each time period. This variable was coded 1 if respondents indicated they used the

Internet for any of the 27 functions listed in Figure 1; if not, the variable was coded 0.

Frequency of Internet use. We constructed an index to measure frequency and range of applications for which respondents used the Internet. This index consists of the mean frequency of use for each of the 27 online functions. This was an internally consistent measure (Cronbach's alpha of .91) with high stability over time (test-retest correlation=.66). As described below, using both exploratory and confirmatory factor analysis, we examined the substructure of this index among those who used the Internet at all (i.e., those for whom *Use Internet* was true).

[figure 1 here]

Components of Internet use. Our previous work showed that one can differentiate participants' Internet use based on their activities (Kraut et al., 2002). Exploratory factor analysis of a list of 28 online activities collected from respondents in the Pittsburgh area suggested that typical Internet use can be broken out into at least 5 components: communicating with friends and family, communicating with strangers, acquiring instrumental information, finding product information, conducting commercial transactions, and entertainment. Because in the current study we added multiple items assessing respondents' use of the Internet to seek health-related information, we expected to uncover six components for why respondents used the Internet: communication with friends and family,

communication with strangers, news and instrumental information, health information, commerce, and entertainment.

To examine the structure of Internet use in the current sample, we conducted a series of confirmatory factor analyses. The single factor model (Model 1 in Table 1), in which all 27 items in Figure 1 are presumed to reflect a single latent variable, represents the hypothesis that Internet use is best represented by a single index that taps how frequently respondents used the Internet regardless of what they use it for. This model tests the default assumption made in the research literature as a whole. The single factor model was a very poor fit to the data (Bentler-Bonett Normed Fit Index=.79; CFI=.81). The input data consisted of the respondents' average Internet use for each function across the two surveys (i.e., 922 respondents with Internet access by 27 function matrix). We compared this single factor model to several multi-factor models. Model 2 tests whether differentiating between interpersonal communication and other uses explains the data well. Model 3 differentiates the non-communication uses of the Internet, but lumps communication with friends and family together with communication with strangers. Model 4 differentiates all components, except for the informational uses, and combines other information about news and local events with health information. Model five is the six-factor solution described previously. It represents the hypothesis that one can distinguish six distinct ways of using the Internet.

[table 1 here]

The six-component model (model 5 in Table 1) was the best fit to the data. It is the model reflected in Figure 1. It was a much better fit than the single factor model (model 1) and significantly better than models that: (a) merely distinguished between communication and other uses (model 2), (b) combined different kinds of communication (model 3), or (c) combined different kinds of information (model 4).

Frequency of TV viewing. Respondents also indicated at each time period how often they used television for each of the 21 functions in the six months prior to the survey, using a logarithmic-like, Likert response scale that ranged from several times per day to never. These functions were a subset of the functions asked about the Internet, excluding the interpersonal communication activities that are impossible to perform using a television such as joining online groups or communicating with friends or relations. The index was highly reliable (Cronbach's $\alpha=.85$) and had high stability across time (test-retest reliability=.63).

Control variables. Respondents provided their gender, age, marital status, level of education, race, and income, as reported at Time 1. In addition, at Time 1, we included John, Donahue & Kentle's (1991) measure of extraversion. The extraversion scale was reliable (Cronbach's $\alpha=.83$). Because these variables have been associated with Internet use, TV viewing, in other research, we include them in all analyses that follow

Data analysis methods.

We use hierarchical linear growth models (Singer & Willett, 2003) to estimate how respondents' Internet use influences their TV watching. In hierarchical linear growth models, an outcome of interest (in this chapter, TV viewing) is measured at multiple time periods (here on questionnaires collected in 2000 and 2001). The predictors include static characteristics of the respondent (here gender, race, education, and extraversion), time (whether the data was collected in 2000 or 2001), and the amount the respondent used the Internet. Although we collected information about Internet use both in 2000 and 2001, we use only the data from 2000 in the models, to make interpretation of the data clearer. By using Internet use only from Time 1, we exclude the ambiguity that may result from TV habits changing as a result of Internet use. Ordinary least squared (OLS) regression techniques are not appropriate for longitudinal designs with repeated measures, because OLS regression assumes that measurement errors are independent, normally distributed, and have constant variance. In contrast, hierarchical linear modeling recognizes that responses from the same respondent are not independent of each other. The hierarchical linear growth model separates out the variances associated with the respondent from the variances associated with the time period nested within the respondent. The models allow both intercepts (here, the mean levels of TV use) and slopes (change in TV use over time) to vary by respondent, and the analysis attempts to account for both individual differences in intercepts and slopes. It calculates the correct degrees of freedom associated with each level of the analysis (respondent or questionnaire) and provides more appropriate estimates of the standard errors than does OLS regression.

In the analyses in Table 3 below, we distinguish between cross-sectional associations, which account for individual differences in intercepts, and longitudinal associations, which account for individual differences in slopes. Models 1 and 3 are cross-sectional analysis that test whether respondents who used the Internet at all or those who used it more frequently differ on TV viewing from those who do not use the Internet at all or use it less frequency. For these cross-sectional analyses, Internet use and the dependent variable are measured on the first questionnaire. Models 2 and 4 are analyses of the panel data, adding time to Models 1 and 3 respectively. The Time effect in the panel analyses tests whether frequency of TV viewing changes between Time 1 and Time 2. The Time by Use Internet interaction tests whether changes in TV viewing differ among Internet users and non users. The Time by Internet Frequency interaction tests whether the change in TV viewing varies with the amount the respondents uses the Internet.

In Table 4, we conducted similar analyses, using the disaggregated measures of frequency of Internet use for specific purposes (i.e., communication with friends, communication with strangers, information, entertainment, commerce, and health). Because using the Internet for a distinct purpose is contingent on using the Internet at all, we conducted this analysis only among Internet users. We conducted preliminary analyses to determine whether the overall frequency of Internet use influences TV viewing among Internet users (i.e., that the earlier results do not reflect only the comparison of Internet users and non-users). We then substitute for the six components of Internet use listed in Table 1 for the

overall frequency of use, including them in a single model to control for overall Internet use when examining the effects of any single type of use.

RESULTS

Preliminary analyses

Table 2 show the descriptive statistics for the variables used in the regressions, in 2000.

[table 2 here]

Overall Internet frequency

Model 1 in Table 3 shows results from the cross-sectional modeling, predicting the frequency of television watching respectively from Internet Frequency, the continuous measure of frequency of Internet use. In terms of control variables, poorer and more extraverted respondents watch TV more frequently than do others. The significant, positive coefficient of the Internet frequency variable means that heavier Internet users, i.e., those who use the Internet more frequently overall and for a wider range of purposes, also watch TV more frequently.

Model 2 adds the Time and Time by Internet Frequency interactions to Model 1, to assess whether TV viewing changed over time and whether Internet Frequency moderated this change. Note that the estimate for the main effect for Internet Frequency in Model 2 is approximately of the same magnitude and significance level as it was in Model 1. The main effect of Internet Frequency represents the cross-sectional association of Internet Frequency with the frequency of TV

watching (although in Model 2 it represents the association of Internet Frequency at Time 1 with TV watching at both Time 1 and Time 2). The statistically significant Time effect in Model 2 shows that TV viewing increased between 2000 and 2001 for the sample as a whole. The statistically significant negative Time by Internet Frequency interaction shows that the growth in TV viewing was less strong among respondents who used the Internet heavily compared to non-users. Figure 2 illustrates the interaction. While the TV watching increased for respondents who did not use the Internet at all, it declined among those who used it most in the sample.

[figure 2 here]

[table 3 here]

The overall frequency of Internet use is based on two components: a contrast between Internet users and non-users, and frequency of use among those who do use the Internet. To clarify the results involving Internet Frequency in Model 2, we conducted two supplementary analyses that contrasted Internet users and non-users, and among Internet users, contrasted those with compared heavier and lighter use. The non-significant Use Internet estimate in Model 3 shows that cross-sectionally, Internet users and non-users did not differ in their TV viewing. However, the significant, negative Time by Use Internet interaction shows that TV viewing increased among respondents who did not use the Internet, but declined among those who did use it. In Model 4, the significant positive Internet

Frequency estimate is a cross-sectional effect. It shows that among Internet users, people who used the Internet more frequently also watched TV more frequently. In contrast, the significant negative Time by Internet Frequency interaction shows that longitudinally, heavier Internet users dropped TV viewing more than lighter users.

[table 4 here]

Components of Internet use

Model 5 in Table 5 disaggregates overall frequency of Internet use into 6 components, to determine whether different ways of using the Internet have distinct effects on frequency of TV viewing. This model predicts TV watching better than does the aggregated model (Chi-square=42.34, df=10, $p<.0001$). The functional displacement hypothesis reviewed earlier predicts that cross-sectionally, people who use the Internet most for entertainment would be the heaviest TV viewers and that heavy Internet use for entertainment would lead to declines in TV viewing, as people shift their entertainment choices from one medium to the other.

The predictions from the functional displacement hypothesis were only partially confirmed. People who used the Internet for entertainment watched TV more frequently than those who did not, but so did those who used it to gather health information, to research and purchase products, and to communicate with strangers. The Time by Entertainment and Time by Information interactions were not significant, suggesting that using the Internet for entertainment or for

watching the news and getting other information did not lead to larger than average declines in TV viewing. On the other hand, the significant, negative coefficient for the Time by Communicating with Strangers estimate shows that among Internet users, TV watching declined more among people who joined online groups and used the Internet to meet new people than it did among other users of the Internet.

[table 5 here]

DISCUSSION

Methodological and substantive contributions.

This research examines the role of the Internet in changing people's use of other media. Our focus in this research was both substantive, to examine the functional displacement hypothesis in the context of Internet use, and methodological, to encourage researchers to be sensitive to methodological detail when investigating the impact of this new technology on people's lives.

Methodologically, our results show that researchers must move beyond the cross-sectional research methods that characterize most of work in this area to make causal claims about the impact of the Internet in daily life. As the research reported here demonstrates, cross-sectional data and longitudinal data led to different conclusions. Cross-sectional results showed that people who used the Internet more watched TV more frequently and for a wider variety of purposes than did lighter Internet users. In contrast, longitudinal results show that both

Internet use versus non-use and the frequency of Internet use, among users, was associated with declines in the frequency of watching TV.

The second methodological contribution of this paper is to demonstrate that how people use the Internet makes a difference in the effects it is likely to have. The confirmatory factor analyses demonstrated that conceptualizing Internet use as an undifferentiated aggregate fits the data poorly, even though this is the dominant approach in the research literature. At a minimum, research needs to distinguish among the ways that people use the Internet: information seeking, communication with friends and family, entertainment. Among informational uses of the Internet in our dataset, school, work and hobbies, product information, and health information uses can be distinguished. Undoubtedly, had we asked additional questions about using the Internet for gathering political information or information in other substantive domains, those domains would also have been distinguishable. Among social uses of the Internet, distinguishing communication with friends and family from communication with strangers fits the data better than a model that lumps all communication together.

Substantively, the results of our research provide evidence that use of the Internet is associated with declines in TV viewing. That is, aggregate Internet use in 2000 predicted declines in television watching between 2000 and 2001. While these broad results are consistent with the functional displacement hypothesis, a more detailed examination is not. According to the functional displacement hypothesis, people who use the Internet most for informational and entertainment purposes should show the strongest declines in TV viewing. However, the results were not

consistent with this detailed prediction. The cross-sectional data shows that people who used the Internet for entertainment, for health information, and for commerce are the heaviest TV viewers, suggesting that people who desire particular types of information in one media will use a new media for the same purposes. However, using the Internet for entertainment or news (the dominant uses of TV), did not predict above-average declines in TV viewing. In contrast, only using the Internet for meeting new people was associated with declines in TV viewing over and above those resulting from aggregate use. Interestingly this function of Internet use has no parallels in TV viewing.

Limitations

We have shown that one reaches different conclusions using cross-sectional and longitudinal data to examine the impact of using the Internet. The hierarchical linear growth models used in our research take into account individual differences in TV viewing and Internet use at the initial time period, and in the co-variation between these individual differences and change. We acknowledge, however, that longitudinal designs are not panaceas. They are still subject to validity threats. Other events co-varying with time may drive both changes in Internet use and changes in outcomes. These covariates can be internal to the individuals, such as learning or maturation, or external, such as the business cycle or change in popular culture. In addition, because of errors of measurement, pre-existing differences among participants are never fully, statistically controlled in longitudinal designs. Finally, pre-existing differences among individuals may lead some of them to be more susceptible to change. Only experimental research, in

which participants are randomly forced to use the Internet or are prevented from using it, can lead to pure inferences about causation. However, true experiments are difficult to perform when one is seeking to examine broad social effects in the population or when examining the impact of technology on phenomena, such as the development of friendship, that are likely to emerge only after long periods of use. In addition, as Kraut et al. (2002) demonstrated, random assignment of participants to Internet use may no longer be possible in the United States, at least among people who buy their own computer. In their study, over 80% of individuals assigned to a no-Internet control group subscribed to Internet service on their own.

CONCLUSION

The Internet has become common in American homes. It is used for a wide range of purposes, including communication, information, entertainment, and commerce. There is controversy about the effects that widespread diffusion of the Internet is having on the lives of its users. This paper used a national panel to examine how Internet use changed participants' use of time. We have made three contributions in this paper. First, we have demonstrated that cross-sectional research methods are likely to lead to misleading conclusions about the effects of Internet use. Second, we have demonstrated that measuring and analyzing Internet use at a disaggregated level leads to better models in two senses. The disaggregated models fit the data better than models based on aggregated data. Third, we have demonstrated, using longitudinal data, that heavier Internet use is associated with declines in TV viewing. Although this result is broadly consistent

with a functional displacement hypothesis, detailed results were not. Using the Internet for entertainment and information were not associated with above-average declines in TV viewing, while using it to meeting new people online and to participate in online groups was.

ACKNOWLEDGMENTS

This research was supported by National Science Foundation grant IRI-9900449

References

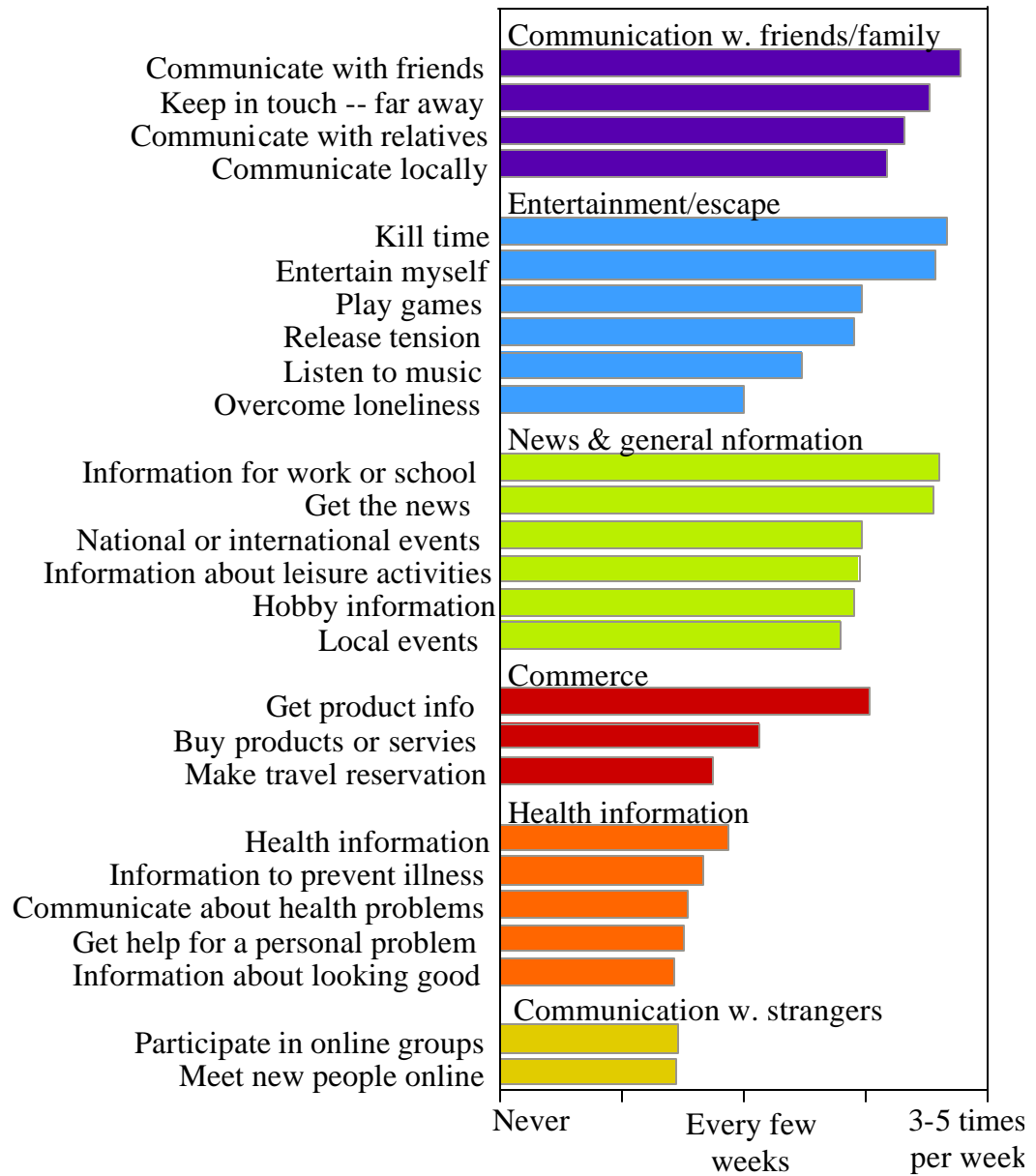
- Atkin, D. J. (2001). Home ecology and children's television viewing in the new media environment. In J. Bryant & J. A. Bryant (Eds.), *Television and the American family* (2nd ed., pp. 49-74). Mahwah, NJ, US: Lawrence Erlbaum Associates.
- Bass, S. B. (2003). How will Internet use affect the patient? A review of computer network and closed Internet-based system studies and the implications in understanding how the use of the Internet affects patient populations. *Journal of Health Psychology, 8*(1), 25-38.
- Boneva, B., Kraut, R., & Frohlich, D. (2001). Using e-mail for personal relationships: The difference gender makes. *American Behavioral Scientist, 45*(3), 530-549.
- Carey, J., & Moss, M. (1985). The Diffusion of New Telecommunications Technologies. *Telecommunications Policy, 145-158*.
- Cole, J. I., Suman, M., Schramm, P., Bel, D. v., Lunn, B., Maguire, P., Hanson, K., Singh, R., & Aquino, J.-S. (2000). *The UCLA Internet Report: Surveying the Digital Future*. Retrieved Dec 30, 2000, from <http://www.ccp.ucla.edu>
- Cummings, J. N., & Kraut, R. (2002). Domesticating computers and the Internet. *The Information Society, 18*(3), 1-18.
- Gershuny, J. I. (2000). *Changing Times: Work and Leisure in Post-industrial Society*. Oxford University Press: Oxford:.

- Goget, J. F., Yamauchi, Y., & Suman, M. (2002). The Internet, Social Networks, and Loneliness. *IT & Society, 1*(1), 180-201.
- Howard, P. E. N., Rainie, L., & Jones, S. (2001). Days and nights on the Internet: The impact of a diffusing technology. *American Behavioral Scientist, 45*(3), 383-404.
- Huesmann, L. R., Moise-Titus, J., Podolski, C.-L., & Eron, L. D. (2003). Longitudinal relations between children's exposure to TV violence and their aggressive and violent behavior in young adulthood: 1977-1992. *Developmental Psychology, 39*(2), 201-221.
- John, O., Donahue, E., & Kentle, R. (1991). *The Big Five Inventory*. Berkeley, CA.
- Katz, J., & Aspden, P. (1997). A nation of strangers? *Communications of the ACM, 40*(12), 81-86.
- Kaynay, J. M., & Yelsma, P. (2000). Displacement effects of online media in the socio-technical contexts of households. *Journal of Broadcasting and Electronic Media, 4*(2), 215-229.
- Kommers, N., & Rainie, L. (2002). *Use of the Internet at Major Life Moments*. Pew Internet & American Life Project. Retrieved May 9, 2003, from: <http://www.pewinternet.org>
- Kraut, R., Kiesler, S., Boneva, B., Cummings, J. N., Helgeson, V., & Crawford, A. M. (2002). Internet paradox revisited. *Journal of Social Issues, 58*(1), 49-74.

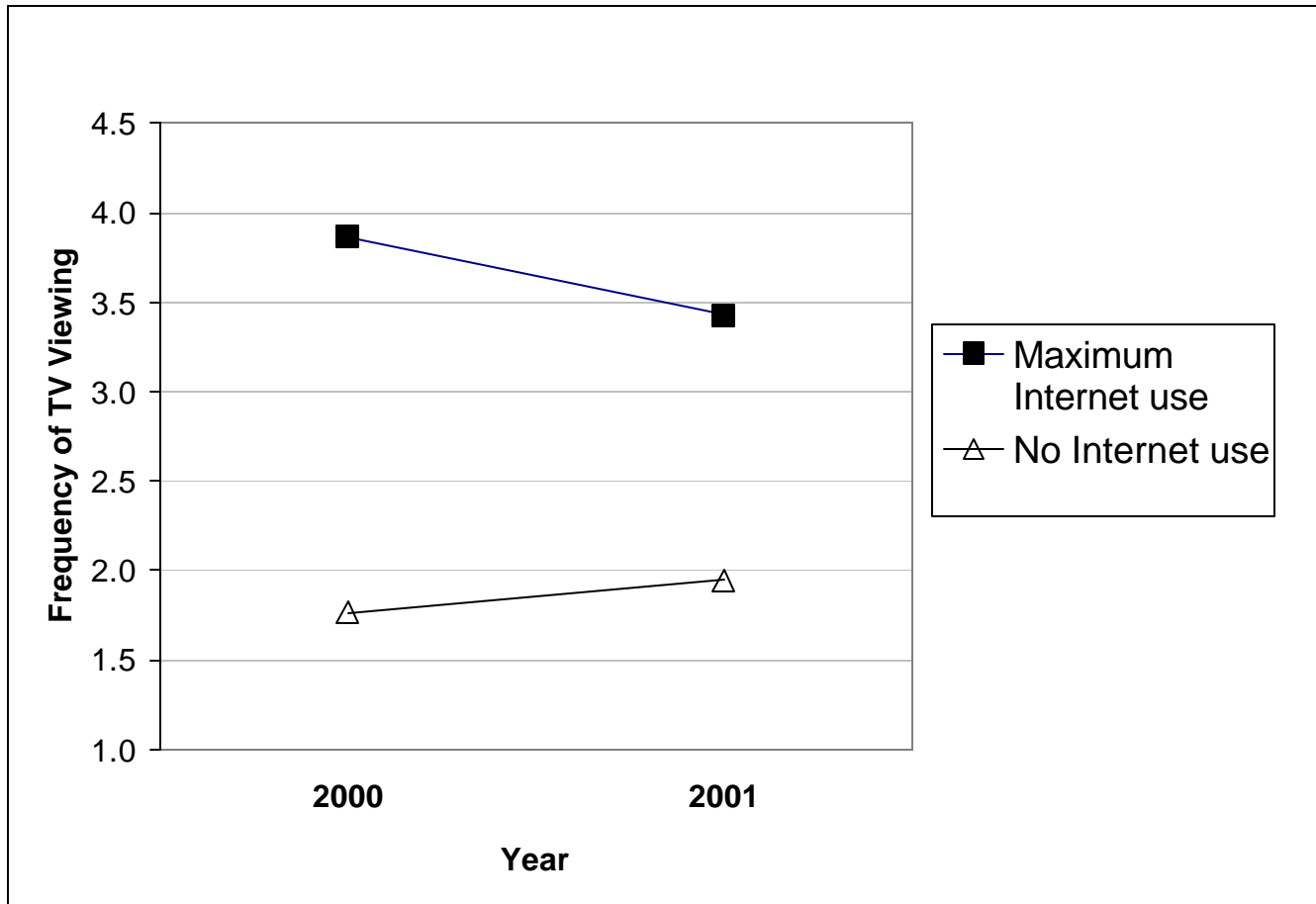
- Kraut, R., Mukhopadhyay, T., Szczypula, J., Kiesler, S., & Scherlis, W. (1999). Communication and Information: Alternative Uses of the Internet in Households. *Information Systems Research*, 10(4), 287-303.
- Kraut, R., Patterson, M., Lundmark, V., Kiesler, S., Mukhopadhyay, T., & Scherlis, W. (1998). Internet paradox: A social technology that reduces social involvement and psychological well-being? *American Psychologist*, 53(9), 1017-1031.
- Kraut, R. E., Scherlis, W., Mukhopadhyay, T., Manning, J., & Kiesler, S. (1996). HomeNet: A field trial of residential internet services. *Communications of the ACM*.
- Leiner, B. M., Cerf, V. G., Clark, D. D., Kahn, R. E., Kleinrock, L., Lynch, D. C., Postel, J., Roberts, L. G., & Wolff, S. (2002, December 10, 2003). *A Brief History of the Internet (Version 3.32)*. The Internet Society. Retrieved Feb 10, 2004, from: <http://www.isoc.org/internet/history/brief.shtml>
- Lenhart, A., Rainie, L., & Lewis, O. (2001, June 20, 2001). *Teenage life online: The rise of the instant-message generation and the Internet's impact on friendships and family relationships*. Pew Internet & American Life Project. Retrieved June 20, 2001, from: <http://www.pewinternet.org/>.
- Nie, N. H., & Hillygus, D. S. (2002). Where Does Internet Time Come From?: A Reconnaissance. *IT & Society*, 1(2), 1-20.
- Pew Internet & American Life Project. (2003). *Internet Activities*. Retrieved May 21, 2003, from the World Wide Web: http://www.pewinternet.org/reports/chart.asp?img=Internet_A8.htm

- Pronovost, G. (2002). The Internet and time displacement: A Canadian Perspective. *IT & Society, 1*(1), 44-53.
- Putnam, R. (2000). *Bowling alone: The collapse and revival of American community*. New York: Simon & Schuster.
- Robinson, J. P. (1990). Television's effects on families' use of time. In J. Bryant (Ed.), *Television and the American family* (pp. 195-209). Hillsdale, NJ, England: Lawrence Erlbaum Associates.
- Robinson, J. P., & Haan, J. D. (this volume). Information technology and family time displacement.
- Robinson, J. P., & Kestnbaum, M. (1999). The personal computer, culture, and other uses of free time. *Social Science Computer Review, 17*(2), 209-216.
- Robinson, J. P., Kestnbaum, M., Neustadt, A., & Alvarez, A. (2002). Information technology and functional time displacement. *IT & Society, 1*(1), 21-36.
- Singer, J. D., & Willett, J. B. (2003). *Applied longitudinal data analysis*. New York: Oxford University Press.
- U. S. Department of Commerce. (2002). *A nation online : How Americans are expanding their use of the Internet*. Washington, DC: U. S. Government Printing Office.
- Weiser, E. B. (2001). The functions of Internet use and their social and psychological consequences. *CyberPsychology & Behavior, 4*(6), 723-743.

Chapter 6 Figure 1



Chapter 6 Figure 2



Note: Plot shows the fitted values from Model 2 for the amount of TV Viewing at Time 1 and Time 2, for respondents who did not use the Internet at all compared to those used it the most at Time 1.

Chapter 6 Table 1

Model number	Number of components	Component descriptions	NFI ^a	CFI ^b	Chi-Sq	DF	P-value, Fit improvement ^c
1	1	27 items as a single component	.79	.81	4638.3	325	
		Communication with family/friends/strangers	.81	.83	4212.95	324	****
2	2	News/health information/commerce/entertainment					
		Communication with family/friends/strangers	.85	.86	3413.19	325	****
		News					
		Health information					
		Commerce					
3	5	Entertainment					
		Communication with family/friends	.88	.89	2703.71	324	****
		Communication with strangers					
		News+Health information					
		Commerce					
4	5	Entertainment					
		Communication with family/friends	.88	.90	2660.26	325	****
		Communication with strangers					
		News					
		Health information					
		Commerce					
5	6	Entertainment					

^aNormed Fit Index

^bComparative Fit Index

^cP-value for the hypothesis that Model N is a better fit to the data than Model N-1; **** p < .0001

Chapter 6 Table 2

Variable	Mean	Std	N
Age (years)	45.2	17.5	913
Education (7-point scale: 1=elementary school, 3=high school graduate, 5=some college, 7=advanced degree)	4.7	1.8	895
Income			
Marital status (1=married, 0=single)	.6	.5	963
Race (1=white, 0=other)	.9	.3	929
Gender (1=male, 0=female)	.4	.5	950
Extraversion (7-point scale: 1=low, 7=high)			
Frequency of Internet use (1=never, 4=1 or 2 days/week, 7=multiple times per day)			
Overall frequency (27 functions):	1.2	1.0	963
News & information	1.6	1.4	959
Entertainment	1.4	1.5	956
Commerce	1.0	.9	958
Health Info	.5	.7	961
Communicating with friends and family	1.8	1.7	959
Meeting new people	.3	.9	955
Frequency of TV watching (1=never, 4=1 or 2 days/week, 7=multiple times per day; mean of 21 functions)	1.8	.8	958

Chapter 6 Table 3

Independent variables	Model 1				Model 2			
	OLS, cross-sectional, Internet frequency				HLM, panel, Internet frequency			
	Estimate	SE	DF	P	Estimate	SE	DF	P
Intercept	1.782	.163	956	****	1.765	.154	956	****
Male (0=female; 1=male)	-.019	.051	956		-.018	.048	956	
Age (12-97)	.002	.002	956		.004	.002	956	*
White (0=minority; 1=white)	-.125	.084	956		-.162	.079	956	*
Married (0=not married; 1= married)	.005	.057	956		.035	.054	956	
Education (1=some elementary school; 7=advanced degree)	-.058	.016	956	***	-.068	.015	956	****
Income(1=<\$10K; 8=>\$70K)	-.058	.012	956	****	-.053	.012	956	****
Extraversion (1= minimum; 5=maximum))	.084	.032	956	**	.081	.030	956	**
Time (0=2000;1=2001)					.178	.035	791	****
Internet Frequency (mean 27 items; 0=no use; 6=multiple times per day)	.239	.028	956	****	.350	.042	956	****
Time X Internet Frequency					-.103	.024	791	****
R-sq	.118							
Chi-Sq					409.28			
AICC					3795.60			
BIC					3805.40			

Note.

OLS = Ordinary Least Squares

HLM = Hierarchical Linear Models

**** p <= .0001; ***; p < .001; ** p <= .01; * p <= .0; t p <= .10.

Chapter 6 Table 4

Effect	Model 3				Me
	All respondents				
	HLM, panel, binary Internet use				HL
	Estimate	SE	DF	P	
Intercept	2.033	.161	956	****	
Male (0=female; 1=male)	.020	.049	956		
Age (12-97)	-.001	.002	956		
White (0=minority; 1=white)	-.153	.082	956	t	
Married (0=not married; 1= married)	-.030	.055	956		
Education (1=some elementary school; 7=advanced degree)	-.038	.016	956	*	
Income(1=<\$10K; 8=>\$70K)	-.037	.012	956	**	
Extraversion (1= minimum; 5=maximum))	.095	.031	956	**	
Time (0=2000;1=2001)	.141	.043	791	**	
Use Internet (0=no; 1 = yes)	.082	.096	956		
Time X Use Internet	-.112	.052	791	*	
Internet Frequency (mean 27 items; 0=no use; 6=multiple times per day)					
Time X Internet Frequency					
Chi-Sq	426.91				
AICC					
BIC	3874.5				

Note.

HLM = Hierarchical Linear Models

**** p <= .0001; ***; p < .001; ** p <= .01; * p <= .0; t p <= .10.

Chapter 6 Table 5

Effect	Internet users only Model 6		
	Estimate	SE	DF
Intercept	1.390	.166	746 ****
Male (0=female; 1=male)	.058	.051	746
Age (12-97)	.000	.002	746
White (0=minority; 1=white)	-.106	.083	746
Married (0=not married; 1= married)	-.020	.057	746
Education (1=some elementary school; 7=advanced degree)	-.028	.017	746 t
Income(1=<\$10K; 8=>\$70K)	-.035	.012	746 **
Extraversion (1= minimum; 5=maximum))	.082	.031	746 **
Time (0=2000;1=2001)	.255	.060	505 ****
Internet use for communicating with friends & family	-.030	.022	746
Internet use for communicating with strangers	.085	.034	746 *
Internet use for news & general information	-.001	.028	746
Internet use for entertainment	.102	.023	746 ****
Internet use for health information	.306	.042	746 ****
Internet use for commerce	.115	.039	746 **
Time X Communicating with friends & family	-.032	.021	505
Time X Communicating with strangers	-.072	.033	505 *
Time X News & general information	-.015	.026	505
Time X Entertainment	-.021	.021	505
Time X Health information	-.032	.042	505
Time X Commerce	-.008	.038	505
Chi-Sq	201.4		
AICC	2551.8		
BIC	2561.0		

Note.

HLM = Hierarchical Linear Models

**** p <= .0001; ***; p < .001; ** p <= .01; * p <= .0; t p<= .10.

Captions

Chapter 6 Figure 1: Frequency of using the Internet for six distinct purposes

Chapter 6 Figure 2: Internet use and changes in TV viewing

Chapter 6 Table 1: Confirmatory factory analysis of uses of the Internet

Chapter 6 Table 2: Descriptive statistics in 2000

Chapter 6 Table 3: Predicting frequency of TV watching from frequency of Internet use, all respondents

Chapter 6 Table 4: Predicting frequency of TV watching from Internet use (all respondents) and frequency of Internet use (Internet users only)

Chapter 6 Table 5: Predicting TV watching from components of Internet use, among those who use the Internet at all